



BENTLEY®

DRUMLINE

FAST TRACK



BENTLEY



Drumline

There's a distinct energy that emanates from the deep, rhythmic vibrations of a collaborative of drummers marching onto the field under Friday night lights. As bass and snare drums alike weave their way through perfectly executed formations, the excitement of a drumline's cadence can be the highlight of the game. Move aside team - there's a new MVP in town.





DRUMLINE™ 4DMT4, GAME DAY 404327, 24 IN X 24 IN - MONOLITHIC

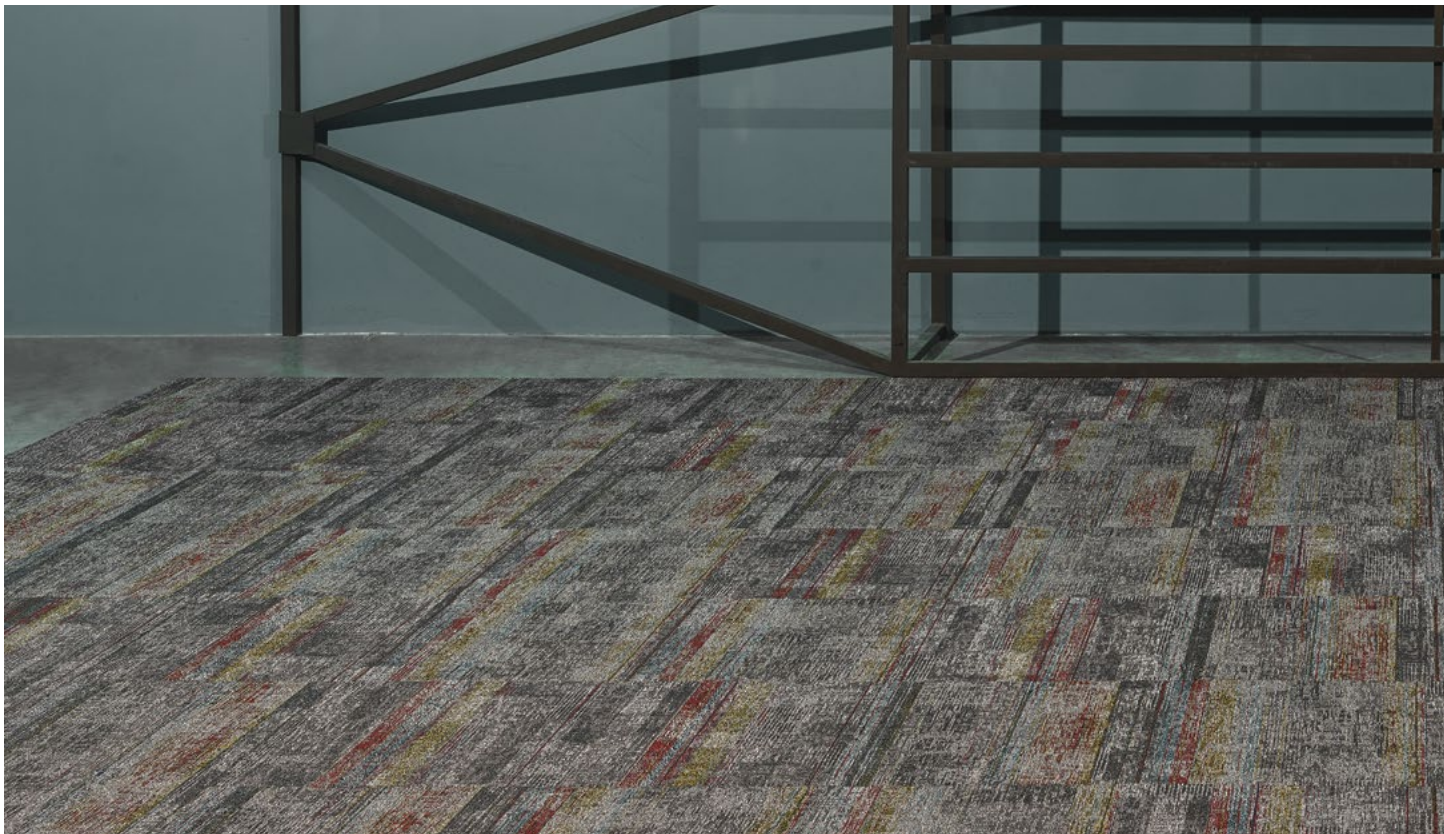
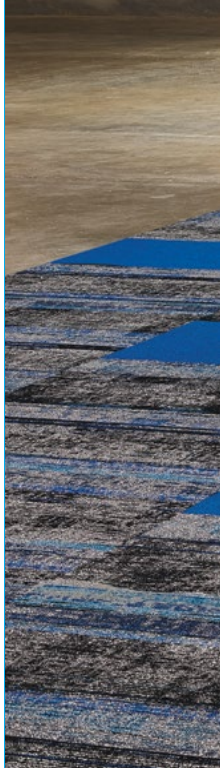


DRUMLINE 4DMT4, GAME DAY 404327, 18 IN X 36 IN - PARQUET





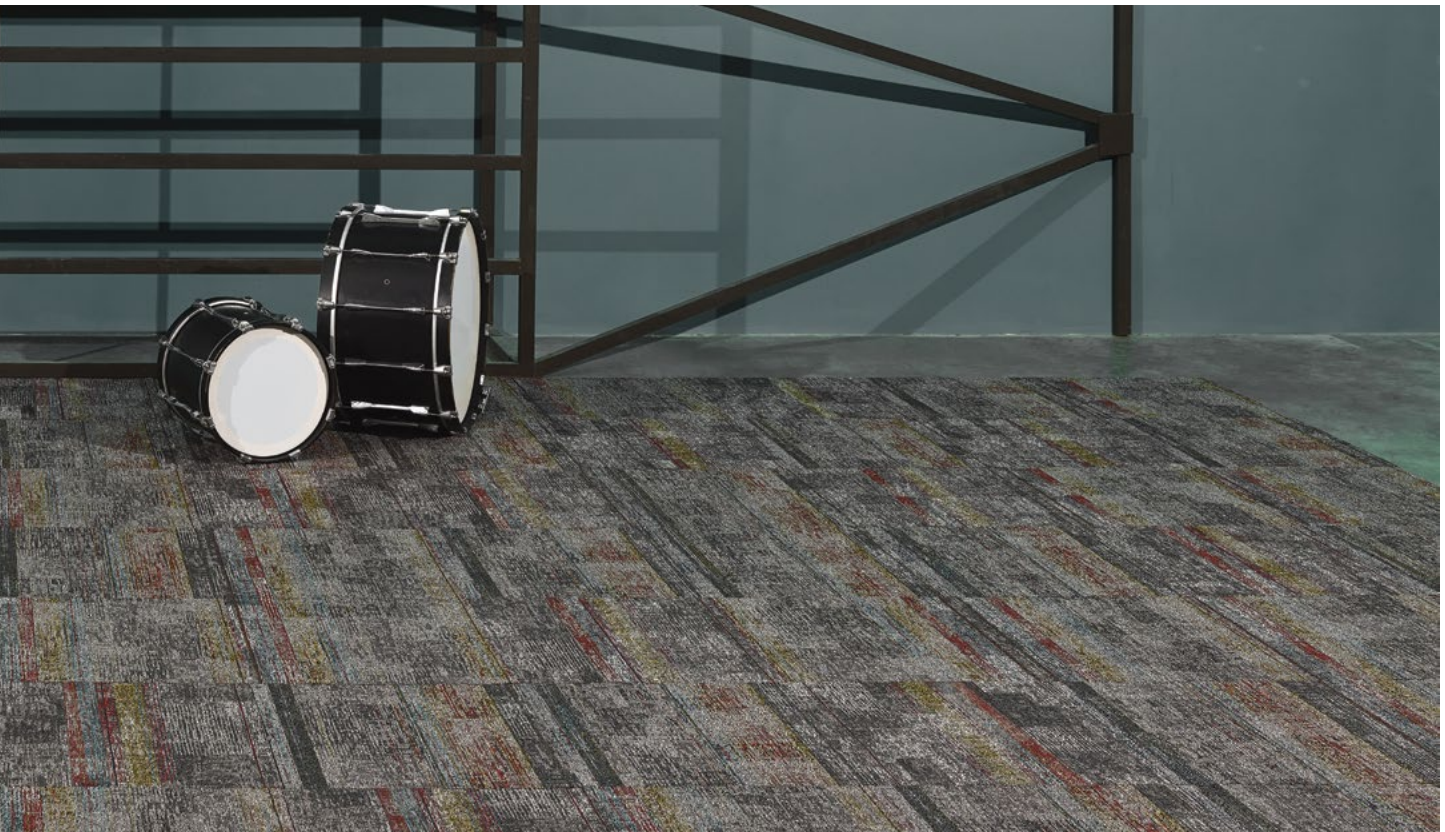
DRUMLINE 4DMT4, ENSEMBLE 404320, 18 IN X 36 IN - BRICK (IN TWO DIRECTIONS)
WITH INSET: **BURNISH™** 4BRT8, RUNNING SPRINGS 402928, 18 IN X 36 IN - HERRINGBONE



DRUMLINE 4DMT4, GAME DAY 404327, 24 IN X 24 IN - MONOLITHIC



DRUMLINE 4DMT4, FIGHT SONG 404322 WITH ACCENT: COHORT™ 8OHT5, SUPPLY + DEMAND 400350
18 IN X 36 IN - BRICK (IN TWO DIRECTIONS)





DRUMLINE 4DMT4, GAME DAY 404327, 18 IN X 36 IN - PARQUET

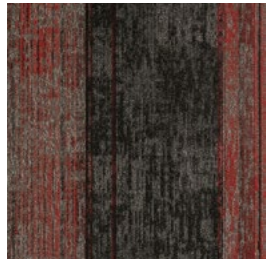


DRUMLINE 4DMT4, GAME DAY 404327, 18 IN X 36 IN - HERRINGBONE

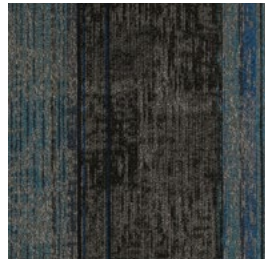
DRUMLINE™



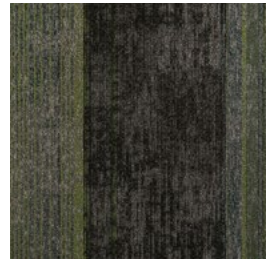
Ensemble 404320



Percussion 404321



Fight Song 404322



Cadence 404323



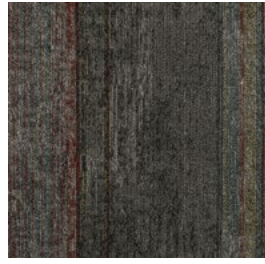
Formation 404324



Mascot 404325



Alma Mater 404326



Game Day 404327



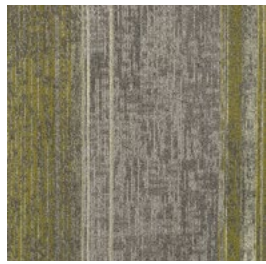
Classmate 404328



Final Exam 404329



Alumni 404330



Graduate 404331

Fast Track is Bentley's quick-ship program. This program is designed for maximum flexibility and expedited delivery to the client. DRUMLINE is available in 12 colorways in 18 in x 36 in and 24 in x 24 in NexStep® Cushion Tile and AFIRMA II™ Hardback Tile. Orders of 1,500 square yards or less will be ready to ship within 10 business days of order. For orders exceeding 1,500 square yards, please contact our Customer Care Concierge for availability. **Fast Track program excludes AFFIXX™ Hardback Tile.**

Style Number 4DMT4
Product Construction Tufted Textured Loop
Fiber Antron® Lumena™ Nylon Type 6,6
Dye Method Solution Dyed

PVC Free Backing Options
 AFFIXX™ Hardback Tile
 AFIRMA II™ Hardback Tile
 NexStep® Cushion Tile

Size Options
 18 in x 36 in, 24 in x 24 in
 18 in x 36 in, 24 in x 24 in
 18 in x 36 in, 24 in x 24 in

For complete product specifications, visit bentleymills.com



CE Mark excludes AFFIXX™ Hardback Tile.

The printed images may not be an accurate reproduction of the product's actual colorways. Please note that images were taken in a loft, full of natural light. We strive to offer an authentic representation, but images may vary according to press run and location lighting. These images are intended as a guide only. If you would like a sample of this product, please call Customer Care at 800.423.4709.

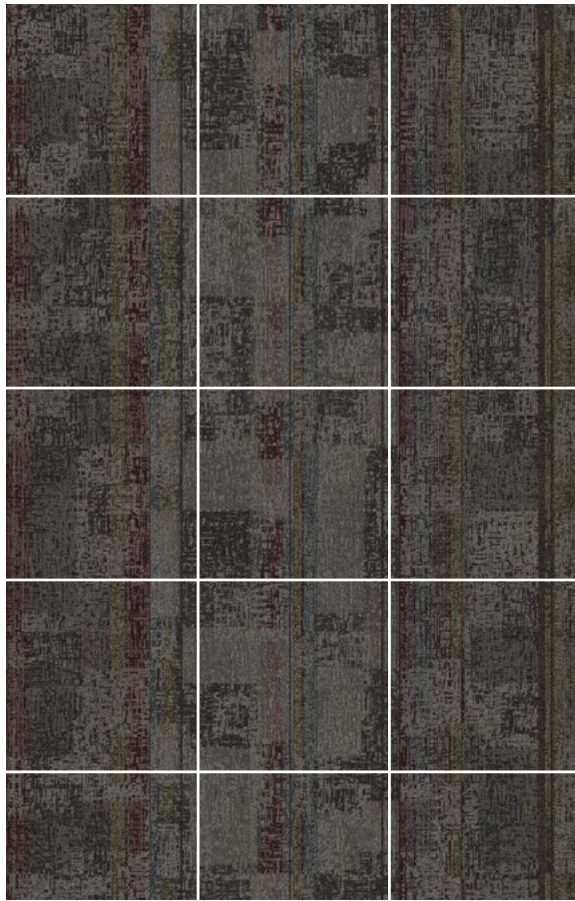
Bentley's carpet products are manufactured in our California mill, a LEED Existing Buildings: Operations and Maintenance Gold certified facility. Product Certifications and Declarations can be found under the Sustainability section of our website. For more information, including additional backing options, detailed specifications, and warranties, please visit bentleymills.com.

Drumline Full Width Pattern Repeat Tile Grid Views

The Drumline full width repeat consists of four separate tiles for size 18 in x 36 in, and three separate tiles for size 24 in x 24 in. To view the full repeat, please refer to the Product Tile View on the website.



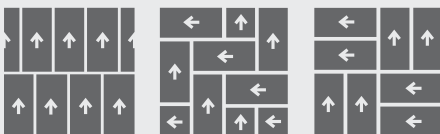
18 in x 36 in



24 in x 24 in

Recommended Carpet Tile Installation Methods

18 in x 36 in

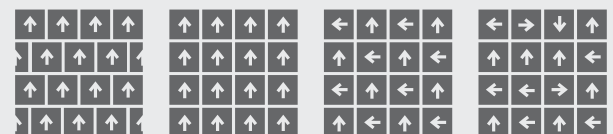


Brick

Herringbone

Parquet

24 in x 24 in



Brick

Monolithic

Quarter Turn

Random

Carpet specifications and components are subject to normal manufacturing tolerances and may change without notice. Product warranted in accordance with the terms and conditions of Bentley's standard printed warranty in effect at time product is sold. All other warranties, including without limitation any implied warranties of merchantability or fitness for a particular purpose, are hereby disclaimed. Made in USA. Warning: unauthorized reproduction of this carpet design constitutes copyright infringement. ©2020 Bentley Mills, Inc.

Need additional samples or information? 800.423.4709 | bentleymills.com

(BK-CP-20.08)

BENTLEY

800.423.4709 | BENTLEYMILLS.COM

14641 EAST DON JULIAN ROAD, CITY OF INDUSTRY, CALIFORNIA 91746