



BENTLEY[®]
HIMITSU NI





LEFT
HIMITSU NI™
4HM200AA0T
Conceal 403741
18 in x 36 in
BRICK

RIGHT
HIMITSU NI
4HM200620R
Secret 403745
12 ft
BROADLOOM



LEFT

HIMITSU NI

4HM200220T

Conceal 403741

24 in x 24 in

BRICK

RIGHT

HIMITSU NI

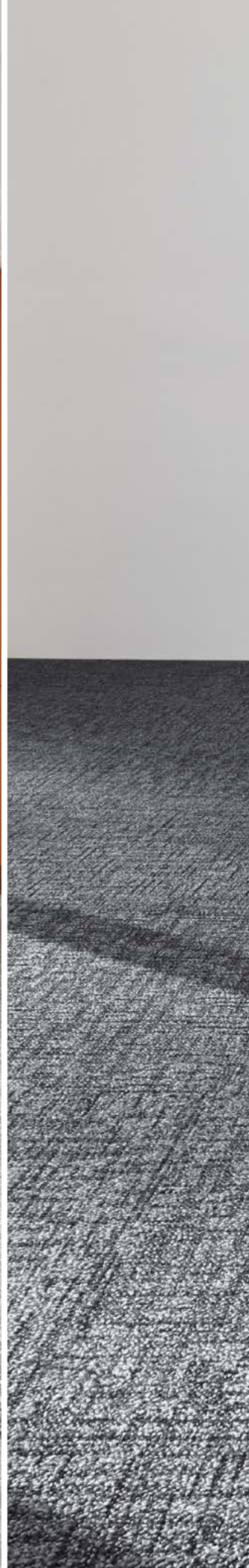
4HM200AA0T

Secret 403745

18 in x 36 in

HERRINGBONE







LEFT
HIMITSU NI
4HM200220T
Conceal 403741
24 in x 24 in
MONOLITHIC

RIGHT
HIMITSU NI
4HM200220T
Secret 403745
24 in x 24 in
QUARTER TURN



LEFT

HIMITSU NI

4HM200AA0T

Secret 403745

18 in x 36 in

ASHLAR

RIGHT

HIMITSU NI

4HM200220T

Conceal 403741

24 in x 24 in

ASHLAR



HIMITSU NI color line as featured in architect folder.



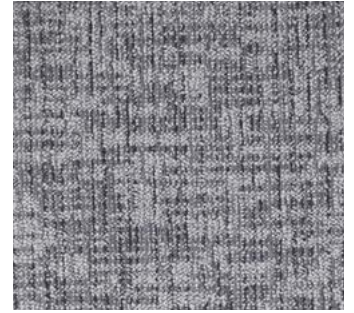
Conceal 403741



Intimate 403744



Secret 403745



Secluded 403746



Private 403747



Under Wraps 403748



Esoteric 403749



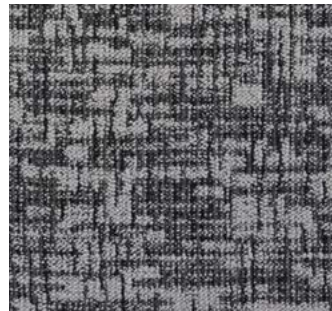
Guarded 403750



Remote 403751



Inner Circle 403752



Obscure 403753



Mysterious 403754



On The QT 403755



Confidential 403756

HIMITSU NI™

SPECIFICATIONS

Style Number	4HM20
Product Construction	Tufted Textured Loop
Fiber	Antron® Lumena™ Type 6,6 Nylon
Dye Method	Solution Dyed
Soil/Stain Protection	XTERA™
Secondary Backing	
Broadloom	High PerformancePC
Carpet Tile	NexStep® Cushion Tile / AFIRMA™ Hardback Tile / AFFIX™ Hardback Tile
Yarn Weight	20 oz/yd ² (678.1 g/m ²)
Machine Gauge	1/12 in (47.2 ends/10 cm)
Pile Height	
High	0.200 in (5.1 mm)
Medium	0.138 in (3.5 mm)
Low	0.100 in (2.5 mm)
Stitches	9.8/in (38.6 ends/10 cm)
Pile Density	7,020 oz/yd ³
Total Weight	
High PerformancePC Broadloom	56 oz/yd ² (1,898.7 g/m ²)
NexStep® Cushion Tile	98 oz/yd ² (3,322.8 g/m ²)
AFIRMA™ Hardback Tile	79 oz/yd ² (2,678.6 g/m ²)
AFFIX™ Hardback Tile	80 oz/yd ² (2,712.5 g/m ²)
Total Thickness	
High PerformancePC Broadloom	0.265 in (6.7 mm)
NexStep® Cushion Tile	0.365 in (9.3 mm)
AFIRMA™ Hardback Tile	0.245 in (6.2 mm)
AFFIX™ Hardback Tile	0.250 in (6.3 mm)
Pattern Repeat	
Broadloom	24 in (60.96 cm) (W) x 39-3/16 in (99.53 cm) (L)
Carpet Tile	None
Radiant Panel	Passes Class 1, ≥ 0.45 W/cm ² (ASTM-E648)
Smoke Density	< 450 Dm corr (ASTM-E662), Flaming
Static	≤ 3.5 kV (AATCC-134), Step
Flammability	Passes Methenamine Pill Test (CPSC-FF1-70)

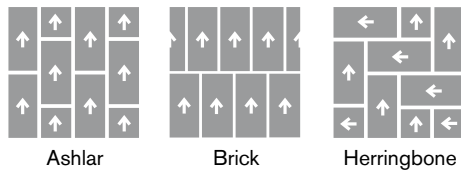
STYLE NUMBERS

HIMITSU NI	BACKING	SIZE
4HM200620R	High PerformancePC Broadloom	12 ft (3.657 m) — Also available in Area Rugs
4HM200AA0T	NexStep® Cushion Tile	18 in x 36 in (45.72 cm x 91.44 cm)
4HM200220T	NexStep® Cushion Tile	24 in x 24 in (60.96 cm x 60.96 cm)
4HM200AA0K	AFIRMA™ Hardback Tile	18 in x 36 in (45.72 cm x 91.44 cm)
4HM200220K	AFIRMA™ Hardback Tile	24 in x 24 in (60.96 cm x 60.96 cm)
4HM200AA0X	AFFIX™ Hardback Tile	18 in x 36 in (45.72 cm x 91.44 cm)
4HM200220X	AFFIX™ Hardback Tile	24 in x 24 in (60.96 cm x 60.96 cm)

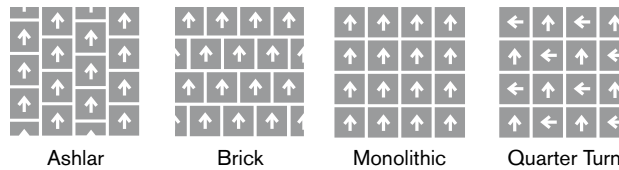
CE Mark excludes AFFIX™ Hardback Tile.

RECOMMENDED CARPET TILE INSTALLATION METHODS

18 in x 36 in



24 in x 24 in



Bentley's High PerformancePC, NexStep® Cushion Tile, AFIRMA™ Hardback Tile, and AFFIX™ Hardback Tile products are Cradle to Cradle Certified™ Silver. Bentley products are also certified under the NSF/ANSI Standard 140 – Sustainable Carpet Assessment (NSF 140). Seven of Bentley's standard backing products are NSF 140 certified at the Gold level or above. Bentley's carpet products are manufactured in our California mill, a LEED for Existing Buildings: Operations and Maintenance (LEED®-EBOM) Gold certified facility. Please inquire about product warranties for specific backing options.

Patterned carpet may require special attention by the installer to assure a suitable match, and must be addressed in the original labor quotation. Products that go through the shearing process may result in a small loss of yarn weight. Slight variations in color among different production lots are normal and should be considered in the overall installation plan. Carpet specifications and components are subject to normal manufacturing tolerances and may change without notice. Technical performance characteristics are subject to adjustment based on results of post-manufacture testing. Product warranted in accordance with the terms and conditions of Bentley's standard printed warranty in effect at time product is sold. All other warranties, including without limitation any implied warranties of merchantability or fitness for a particular purpose, are hereby disclaimed. Made in USA. Warning: unauthorized reproduction of this carpet design constitutes copyright infringement. ©2018 Bentley Mills, Inc.

Need additional samples or information? 800.423.4709 | BENTLEYMILLS.COM
(BK-CP-1018)





800.423.4709 | BENTLEYMILLS.COM

14641 E. DON JULIAN ROAD, CITY OF INDUSTRY, CA 91746