



**BENTLEY®**

LOOK SHARP, SEEING THINGS, AND TRAINED EYE

MODERN CURATOR COLLECTION



**BENTLEY**



Look Sharp, Seeing Things,  
and Trained Eye



You are a Modern Curator.

Today, everyone is a curator—culling, convening, and framing viewpoints while widening perspectives, shaping and shifting how others see and experience the world. These curated points of view, and the stories they tell, fuel innovation, creativity and collaboration.

Moody and a little edgy but created to coexist in engaging ways. The Modern Curator Collection No.1 is a selection of three styles designed to resonate with a generation grappling with unprecedented change and unparalleled creativity.

Look Sharp - a finely composed texture, formal and orderly, in a slightly less predictable blend of soft, pooling hues and shades. Seeing Things - like found objects bound together, positive and negative spaces form geometries that are entirely new, yet deeply familiar. Trained Eye - look closely and see dashed lines that seem gestural, almost delicate. Stand back to see how they assemble, establishing a sweeping scale.

Look Sharp. Seeing Things. Trained Eye. The eyes have it. And the Modern Curator frames it. Long view, side view, rear view, world view. A point of view.



SEEING THINGS™ 6AST20, WHISPER 400085, 18 IN X 36 IN - MONOLITHIC



LOOK SHARP™ 6ALS20, MURMUR 400087, 18 IN X 36 IN - HERRINGBONE



SEEING THINGS 6AST20, SMOLDER 400092, 18 IN X 36 IN - BRICK





TRAINED EYE™ 6ATE24, DIRECT 400091, 18 IN X 36 IN - MONOLITHIC



TRAINED EYE 6ATE24, MUSINGS 400093, 12 FT - BROADLOOM





LOOK SHARP 6ALS20, PROVOCATIVE 400096, 18 IN X 36 IN - ASHLAR



**TRAINED EYE 6ATE24, IMPRESSIONS 400088, 18 IN X 36 IN - MONOLITHIC**



SEEING THINGS 6AST20, INTUITION 400090, 24 IN X 24 IN - QUARTER TURN



SEEING THINGS 6AST20, INTUITION 400090, 12 FT - BROADLOOM

LOOK SHARP™



Whisper 400085



Perception 400086



Murmur 400087



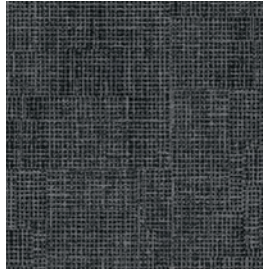
Impressions 400088



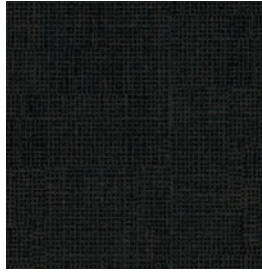
Hint 400089



Intuition 400090



Direct 400091



Smolder 400092



Musings 400093



Risqué 400094



Hearsay 400095



Provocative 400096

**Style Number** 6ALS20  
**Product Construction** Tufted Textured Loop  
**Fiber** Bentley Premium™ Nylon  
**Dye Method** Solution Dyed

For complete product specifications, visit [bentleymills.com](http://bentleymills.com)

**PVC-Free Backing Options**

AFIRMA II™ Hardback Tile  
 AFFIX™ Hardback Tile  
 LuxFelt™ Cushion Tile  
 NexStep® Cushion Tile  
 High PerformancePC Broadloom

**Size Options**

18 in x 36 in, 24 in x 24 in  
 18 in x 36 in, 24 in x 24 in  
 18 in x 36 in, 24 in x 24 in  
 18 in x 36 in, 24 in x 24 in  
 12 ft

Recommended Carpet Tile Installation Methods - Look Sharp

18 in x 36 in



Ashlar



Brick



Herringbone



Monolithic

24 in x 24 in



Brick



Monolithic



Quarter Turn



Random



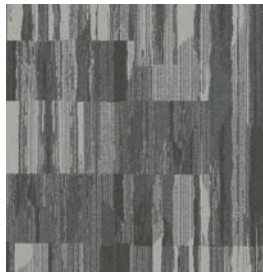
CE Mark excludes AFFIX™ Hardback Tile.



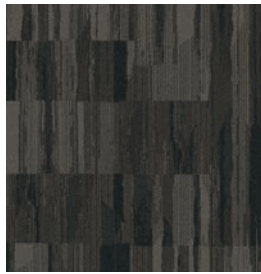
SEEING THINGS™



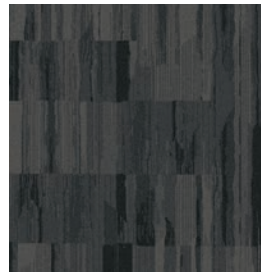
Whisper 400085



Perception 400086



Murmur 400087



Impressions 400088



Hint 400089



Intuition 400090



Direct 400091



Smolder 400092



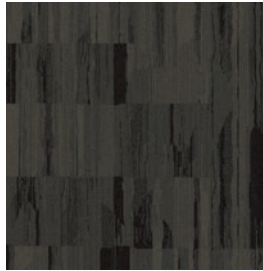
Musings 400093



Risqué 400094



Hearsay 400095



Provocative 400096

**Style Number** 6AST20  
**Product Construction** Tufted Textured Loop  
**Fiber** Bentley Premium™ Nylon  
**Dye Method** Solution Dyed

For complete product specifications, visit [bentleymills.com](http://bentleymills.com)

**PVC-Free Backing Options**  
 AFIRMA II™ Hardback Tile  
 AFFIX™ Hardback Tile  
 LuxFelt™ Cushion Tile  
 NexStep® Cushion Tile  
 High PerformancePC Broadloom

**Size Options**  
 18 in x 36 in, 24 in x 24 in  
 18 in x 36 in, 24 in x 24 in  
 18 in x 36 in, 24 in x 24 in  
 18 in x 36 in, 24 in x 24 in  
 12 ft

Recommended Carpet Tile Installation Methods - Seeing Things

18 in x 36 in



Ashlar



Brick



Herringbone



Monolithic

24 in x 24 in



Brick



Monolithic



Quarter Turn

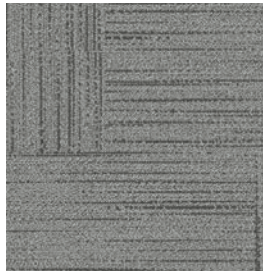


Random

TRAINED EYE™



Whisper 400085



Perception 400086



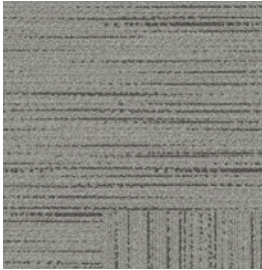
Murmur 400087



Impressions 400088



Hint 400089



Intuition 400090



Direct 400091



Smolder 400092



Musings 400093



Risqué 400094



Hearsay 400095



Provocative 400096

**Style Number** 6ATE24  
**Product Construction** Tufted Textured Loop  
**Fiber** Bentley Premium™ Nylon  
**Dye Method** Solution Dyed

**PVC-Free Backing Options**  
 AFIRMA II™ Hardback Tile  
 AFFIX™ Hardback Tile  
 LuxFelt™ Cushion Tile  
 NexStep® Cushion Tile  
 High PerformancePC Broadloom

**Size Options**  
 18 in x 36 in, 24 in x 24 in  
 18 in x 36 in, 24 in x 24 in  
 18 in x 36 in, 24 in x 24 in  
 18 in x 36 in, 24 in x 24 in  
 12 ft

For complete product specifications, visit [bentleymills.com](http://bentleymills.com)

Recommended Carpet Tile Installation Methods - Trained Eye

18 in x 36 in



Ashlar



Brick



Herringbone



Monolithic

24 in x 24 in



Brick



Monolithic



Quarter Turn



Random



LOOK SHARP 6ALS20, RISQUÉ 400094, 12 FT - BROADLOOM

Bentley's carpet products are manufactured in our California mill, a LEED Existing Buildings: Operations and Maintenance Gold certified facility. Product Certifications and Declarations can be found under the Sustainability section of our website. For more information, including additional backing options, detailed specifications, and warranties, please visit [bentleymills.com](https://www.bentleymills.com).

Carpet specifications and components are subject to normal manufacturing tolerances and may change without notice. Product warranted in accordance with the terms and conditions of Bentley's standard printed warranty in effect at time product is sold. All other warranties, including without limitation any implied warranties of merchantability or fitness for a particular purpose, are hereby disclaimed. Made in USA. Warning: unauthorized reproduction of this carpet design constitutes copyright infringement. ©2023 Bentley Mills, Inc.

**Need additional samples or information?** 800.423.4709 | [bentleymills.com](https://www.bentleymills.com)

(BK-CP-0123)

**BENTLEY®**

**BENTLEY®**

800.423.4709 | [BENTLEYMILLS.COM](http://BENTLEYMILLS.COM)

14641 EAST DON JULIAN ROAD, CITY OF INDUSTRY, CALIFORNIA 91746