



**BENTLEY®**

MANIFESTO





MANIFESTO™  
8MI340AA0T  
Credo 801492  
18 in x 36 in  
HERRINGBONE



LEFT

**MANIFESTO**

8MI340220T

Call To Action 801485

24 in x 24 in

BRICK

RIGHT

**MANIFESTO**

8MI340AA0T

Policy 801489

Wisdom 801490

18 in x 36 in

BRICK







LEFT

**MANIFESTO**

8MI340220T

Call To Action 801485

24 in x 24 in

MONOLITHIC

RIGHT

**MANIFESTO**

8MI340AA0T

Policy 801489

Wisdom 801490

18 in x 36 in

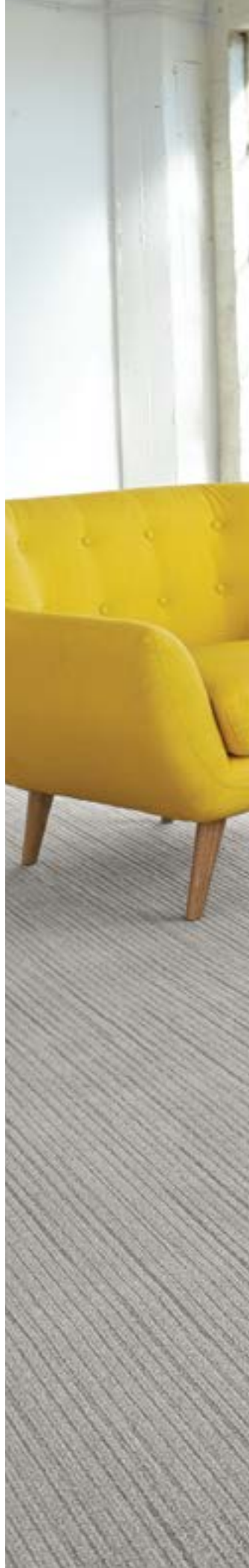
PARQUET



**MANIFESTO**  
8MI340220T  
Affidavit 801488  
24 in x 24 in  
BRICK









**MANIFESTO**  
8MI340630R  
Intention 801481  
12 ft 6 in  
BROADLOOM



MANIFESTO

8MI340220T

Foster Change 801487

24 in x 24 in

QUARTER TURN

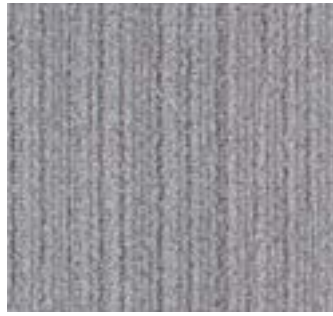


**MANIFESTO**  
8MI340220T  
Call To Action 801485  
24 in x 24 in  
MONOLITHIC

MANIFESTO color line as featured in architect folder.



Catalyst 801480



Intention 801481



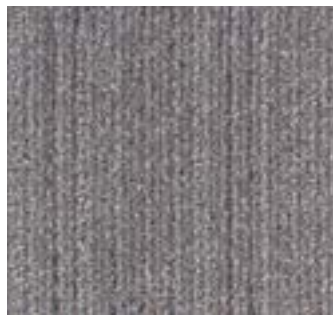
Belief 801482



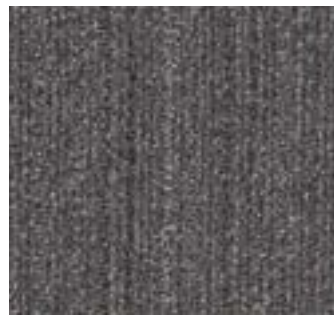
Canon 801483



Free & Brave 801484



Call To Action 801485



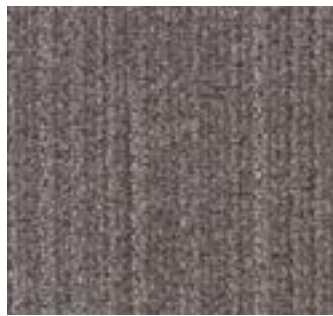
Resolution 801486



Foster Change 801487



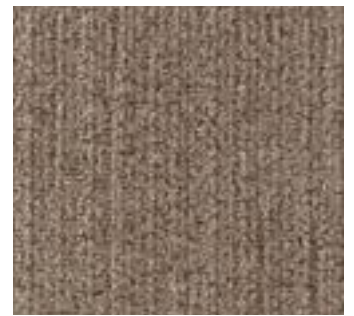
Affidavit 801488



Policy 801489



Wisdom 801490



Deposition 801491



Credo 801492

The printed images may not be an accurate reproduction of the product's actual colorways. Please note that images were taken in a loft, full of natural light. We strive to offer an authentic representation, but images may vary according to press run and location lighting. These images are intended as a guide only. If you would like a sample of this product, please call Customer Care at 800.423.4709.

# CURIO COLLECTION

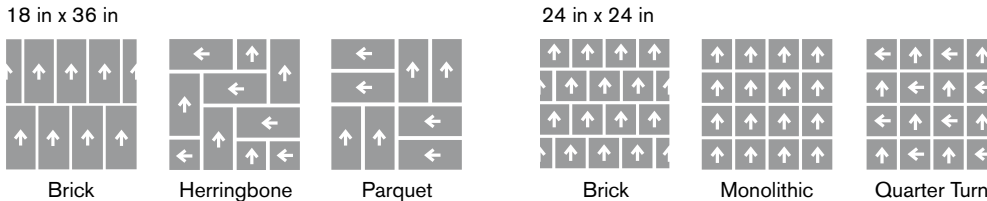
## SPECIFICATIONS

Style Number	8MI34
Product Construction	Tufted Tip-Sheared
Fiber	Antron® Legacy™ Type 6,6 Nylon
Dye Method	COLORCAST™
Soil/Stain Protection	XTERA™
Secondary Backing	
Broadloom	High PerformancePC
Carpet Tile	NexStep® Cushion Tile / AFIRMA™ Hardback Tile
Yarn Weight	34 oz/yd <sup>2</sup> (1,152.8 g/m <sup>2</sup> )
Machine Gauge	5/64 in (50.4 ends/10 cm)
Pile Height	
High	0.147 in (3.7 mm)
Medium	0.112 in (2.8 mm)
Low	0.065 in (1.7 mm)
Stitches	9.0/in (35.4 ends/10 cm)
Pile Density	9,229 oz/yd <sup>3</sup>
Total Weight	
High PerformancePC Broadloom	69 oz/yd <sup>2</sup> (2,339.5 g/m <sup>2</sup> )
NexStep® Cushion Tile	107 oz/yd <sup>2</sup> (3,627.9 g/m <sup>2</sup> )
AFIRMA™ Hardback Tile	98 oz/yd <sup>2</sup> (3,322.8 g/m <sup>2</sup> )
Total Thickness	
High PerformancePC Broadloom	0.265 in (6.7 mm)
NexStep® Cushion Tile	0.365 in (9.3 mm)
AFIRMA™ Hardback Tile	0.245 in (6.2 mm)
Pattern Repeat	
Broadloom	Pattern Match Not Required
Carpet Tile	None
Radiant Panel	Passes Class 1, ≥ 0.45 W/cm <sup>2</sup> (ASTM-E648)
Smoke Density	< 450 dm Corrected (ASTM-E662), Flaming
Static	≤ 3.5 kV (AATCC-134), Step
Flammability	Passes Methenamine Pill Test (CPSC-FF1-70)

When selecting colors beyond those swatched in the architect folder, COLORCAST™ utilizes a standard order size of 50 square yards in tile or broadloom (based on style availability) and up to 5% overage. For more information, please contact your local account executive.

STYLE NUMBERS	BACKING	SIZE
<b>MANIFESTO</b>		
8MI340630R	High PerformancePC Broadloom	12 ft 6 in (3.810 m) - also available in area rugs
8MI340AA0T	NexStep® Cushion Tile	18 in x 36 in (45.72 cm x 91.44 cm)
8MI340220T	NexStep® Cushion Tile	24 in x 24 in (60.96 cm x 60.96 cm)
8MI340AA0K	AFIRMA™ Hardback Tile	18 in x 36 in (45.72 cm x 91.44 cm)
8MI340220K	AFIRMA™ Hardback Tile	24 in x 24 in (60.96 cm x 60.96 cm)

## RECOMMENDED CARPET TILE INSTALLATION METHODS



antron. 



Bentley's High PerformancePC, NexStep® Cushion Tile, and AFIRMA™ Hardback Tile products are Cradle to Cradle Certified™ Silver. Bentley products are also certified under the NSF/ANSI Standard 140 – Sustainable Carpet Assessment (NSF 140). Six of Bentley's standard backing products are NSF 140 certified at the Gold level or above. Bentley's carpet products are manufactured in our California mill, a LEED for Existing Buildings: Operations and Maintenance (LEED®-EBOM) Gold certified facility. Please inquire about product warranties for specific backing options.

Patterned carpet may require special attention by the installer to assure a suitable match, and must be addressed in the original labor quotation. Products that go through the shearing process may result in a small loss of yarn weight. Slight variations in color among different production lots are normal and should be considered in the overall installation plan. Carpet specifications and components are subject to normal manufacturing tolerances and may change without notice. Technical performance characteristics are subject to adjustment based on results of post-manufacture testing. Product warranted in accordance with the terms and conditions of Bentley's standard printed warranty in effect at time product is sold. All other warranties, including without limitation any implied warranties of merchantability or fitness for a particular purpose, are hereby disclaimed. Made in USA. Warning: unauthorized reproduction of this carpet design constitutes copyright infringement. ©2016 Bentley Mills, Inc.

Need additional samples or information? 800.423.4709 | BENTLEYMILLS.COM  
(BK-CP-MI-Q216)

**BENTLEY®**



800.423.4709 | BENTLEYMILLS.COM

14641 E. DON JULIAN ROAD, CITY OF INDUSTRY, CA 91746